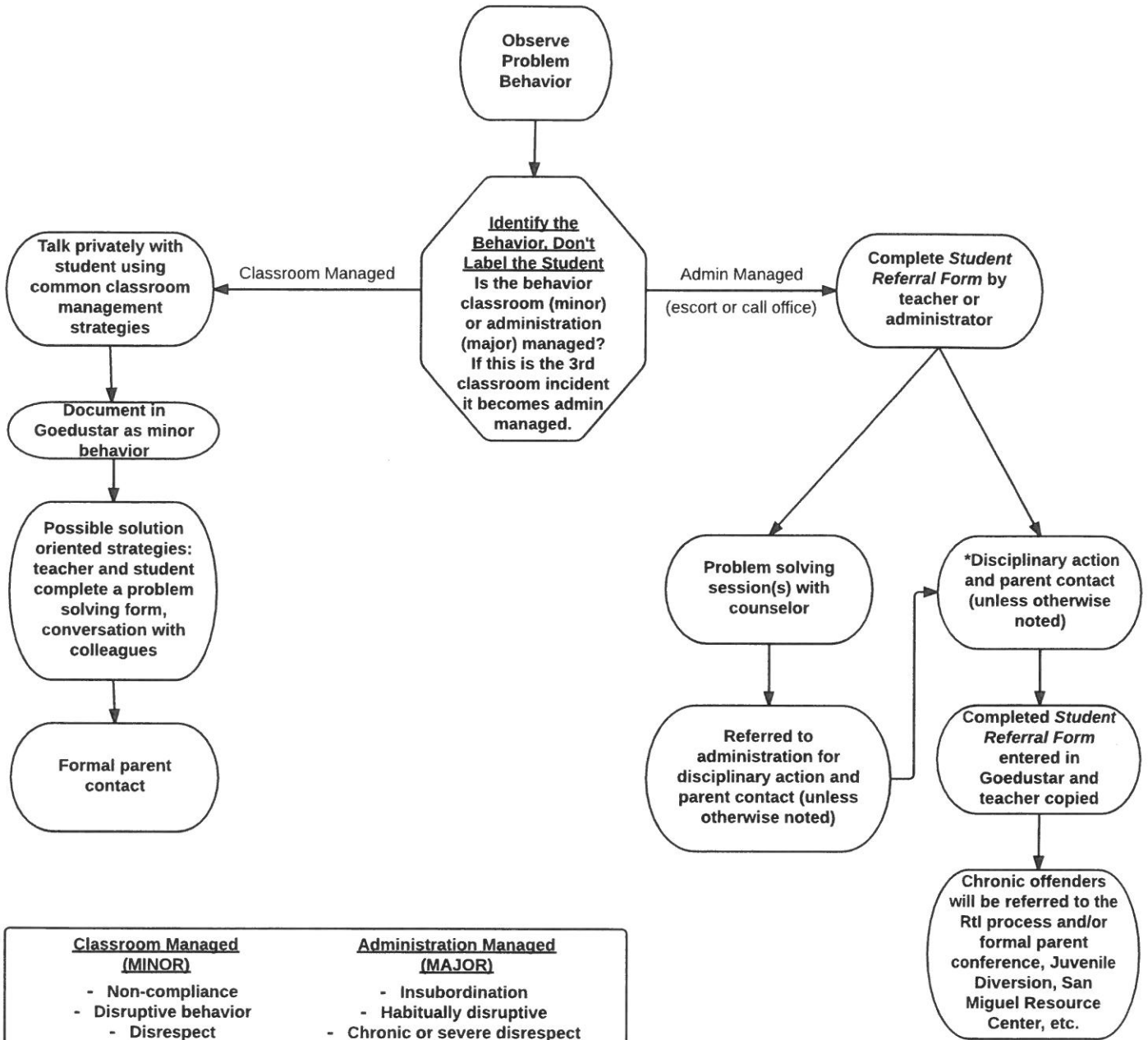


# NORWOOD PUBLIC SCHOOLS CONSEQUENCE FLOW CHART



<u>Classroom Managed (MINOR)</u>	<u>Administration Managed (MAJOR)</u>
<ul style="list-style-type: none"> <li>- Non-compliance</li> <li>- Disruptive behavior               <ul style="list-style-type: none"> <li>- Disrespect</li> <li>- Bullying</li> </ul> </li> <li>- Lack of homework/classwork completion               <ul style="list-style-type: none"> <li>- Lack of class materials</li> </ul> </li> <li>- Dishonesty/cheating/plagiarism</li> <li>- Public displays of affection               <ul style="list-style-type: none"> <li>- Technology violation</li> <li>- Dress code</li> <li>- Gum/food/candy/drinks</li> </ul> </li> <li>- Abusive language (profanity)</li> <li>- Tattling/Whining/Name Calling</li> </ul>	<ul style="list-style-type: none"> <li>- Insubordination</li> <li>- Habitually disruptive</li> <li>- Chronic or severe disrespect               <ul style="list-style-type: none"> <li>- Bullying</li> </ul> </li> <li>- Chronic or excessive lack of homework/classwork               <ul style="list-style-type: none"> <li>- Defiance</li> </ul> </li> <li>- Chronic lack of class materials</li> <li>- Dishonesty/cheating/plagiarism               <ul style="list-style-type: none"> <li>- Technology Violation</li> </ul> </li> <li>- Repeated dress code offenses</li> <li>- Chronic absence/tardiness**               <ul style="list-style-type: none"> <li>- Vandalism</li> </ul> </li> <li>- Controlled substance possession               <ul style="list-style-type: none"> <li>- Weapons</li> </ul> </li> <li>- Fighting/intimidation/hazing               <ul style="list-style-type: none"> <li>- Theft</li> </ul> </li> <li>- Gang-related activity</li> </ul>

\*Two written referrals to administration per quarter result in loss of extra-curricular eligibility for the week

\*\*Tardies are considered up to 10 minutes late. Students are required to serve lunch detention after three (3) tardies in a quarter and every tardy thereafter. High school students who are tardy to 5th period as a result of leaving campus for lunch, will lose their off-campus privilege after three (3). (See Student Handbook for Details)